

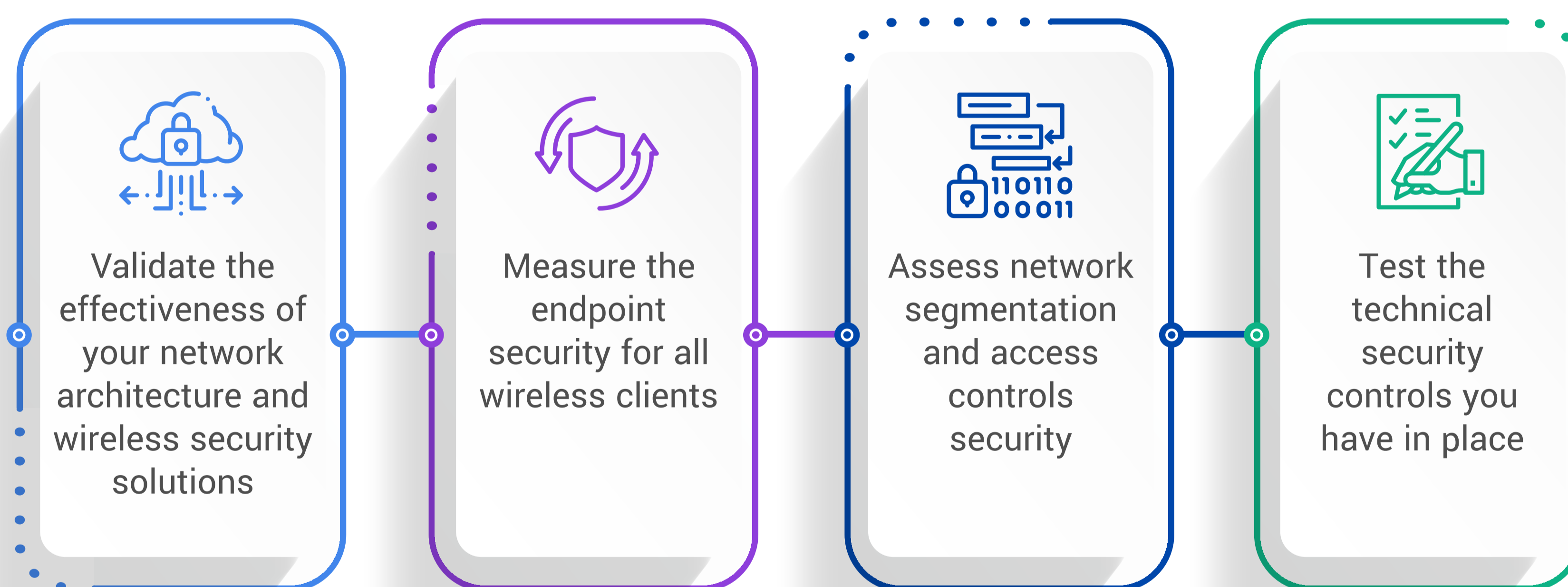
# Wireless Network Pentesting

## Overview

Strengthen your wireless networks' security onsite, or remotely through Cobalt and Hak5's exclusive partnership.

Weak encryption, easily guessable pre-shared keys, rogue wireless devices, and lack of proper segmentation on guest networks are some of the most common ways for hackers to gain access to your corporate networks. Enter Cobalt's wireless pentesting solution powered by Hak5. Our team can identify these vulnerabilities remotely by leveraging the Hak5 WiFi Pineapple Enterprise.

## Key Benefits



Wireless networks are common in every office but misconfigurations could leave organizations exposed. Wireless network pentesting gives you the information you need to prevent an attacker from gaining internal access. During the engagement our team will perform the following services:

- **Wireless security protocols testing:** Are you using any outdated wireless security protocols, and are they protected by weak passwords?
- **Captive portal testing:** Can attackers bypass your captive portals?
- **Segmentation testing from wireless guest networks:** Can people on your wireless guest network access your corporate network?
- **Heat mapping (onsite only):** Are your wireless access points bleeding into nearby parking lots and businesses?
- **Rogue access point identification (onsite only):** Are you detecting all your rogue access points?

## Offering Details

Cobalt's Wireless Pentesting services are an extension of Cobalt's modern pentesting platform. Our security experts will define the scope of work and timelines before kicking off the testing process. Testing is transparent and collaborative – you'll have consistent communication throughout the process. At a high level, here's what you can expect from a wireless pentesting engagement:



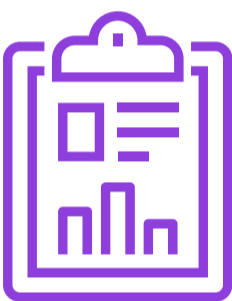
### Before

Before the wireless testing begins, we'll have an initial discussion with you to scope the project and timelines. All tests will happen over an agreed period of time.



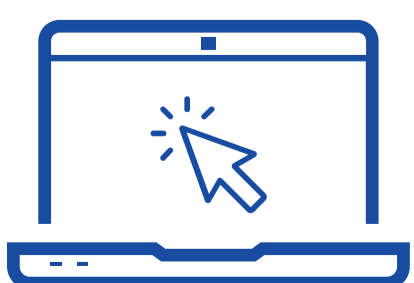
### During

During the engagement, Cobalt will have the Hak5 Pineapple delivered directly to your office, enabling our team to remotely uncover any exposed weaknesses.



### After

At the end of the engagement, we'll deliver any discovered findings and risk rating through a secure site.



Don't see what you need? If you can dream it, we can build it.  
Reach out to us at [cybersecurity\\_services@cobalt.io](mailto:cybersecurity_services@cobalt.io).



San Francisco | Berlin | Boston

[f](#) [in](#) [t](#) [i](#) [v](#) [c](#) [o](#) [b](#) [a](#) [l](#) [t](#) [i](#) [o](#)